



GLAMZ
DANUBE



DANUBE
No.1 building material company

**DANUBE
HOME**

**DANUBE
Direct.com**

**DANUBE
PROPERTIES**

**DANUBE
FASHiON**

**DANUBE
SYSTEMS**



Complete homes, fulfilling lives

Since its inception in 1993, Danube Building Materials has been committed to delivering the widest range of the best products to build your dream home. In the last two decades, Danube has become a household name in building materials, offering over 25,000 products and value added services, while establishing its presence across various industries.

Danube Home – One-stop retail division for all interiors requirements

Danube Systems – A customized security, intelligence and networking solutions company

DanubeDirect.com – The online source for furniture and home décor needs

Danube Properties – Danube Group's realty division

Cha Cha Chai – An innovative tea lounge concept under the Group's lifestyle division

Danube Fashion – A growing division that currently operates Turkish menswear brand Tudors - Shirt Kingdom and Spanish footwear brand Xti.

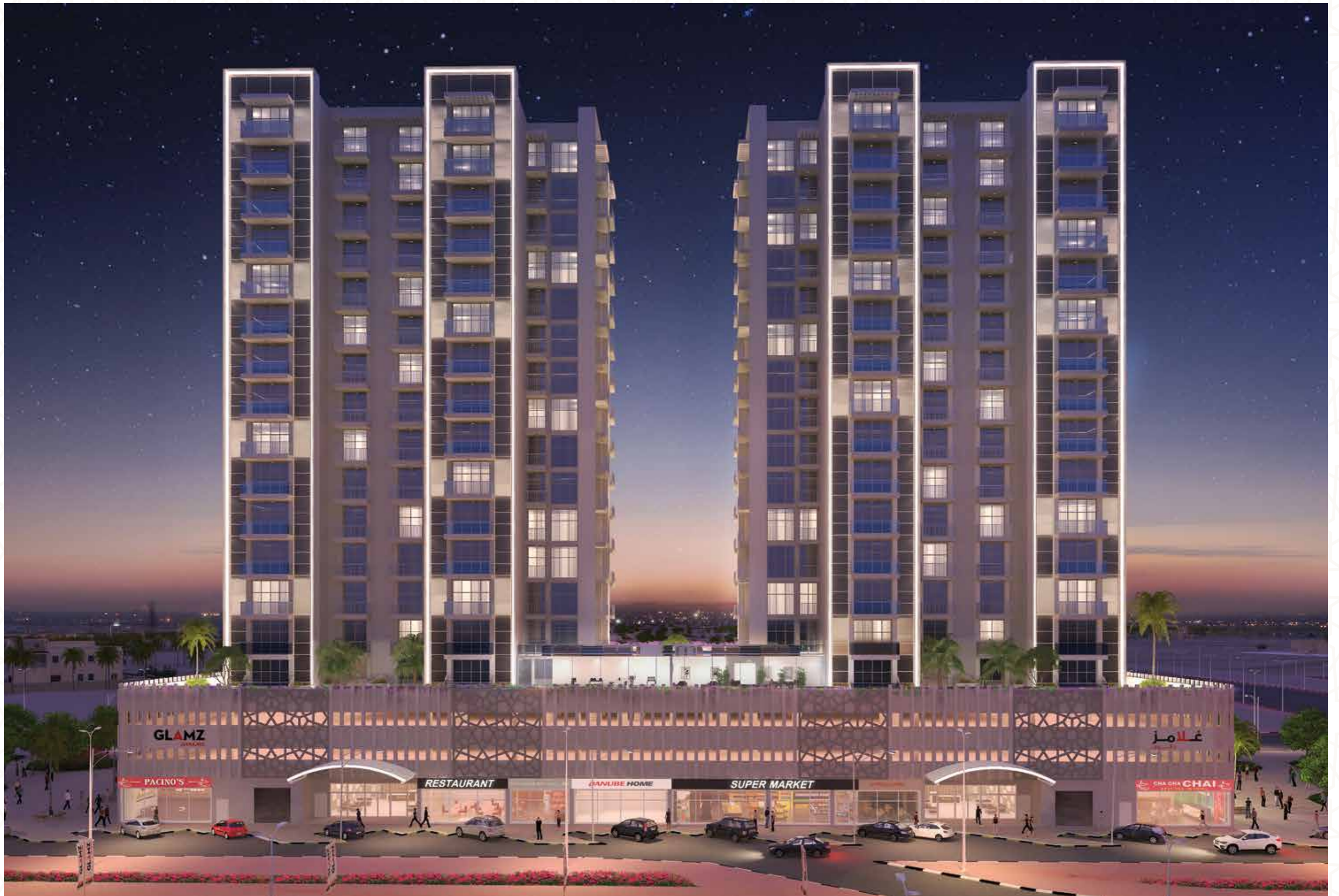
With the phenomenal success of Dreamz, Glitz 1, 2, 3, and Starz,

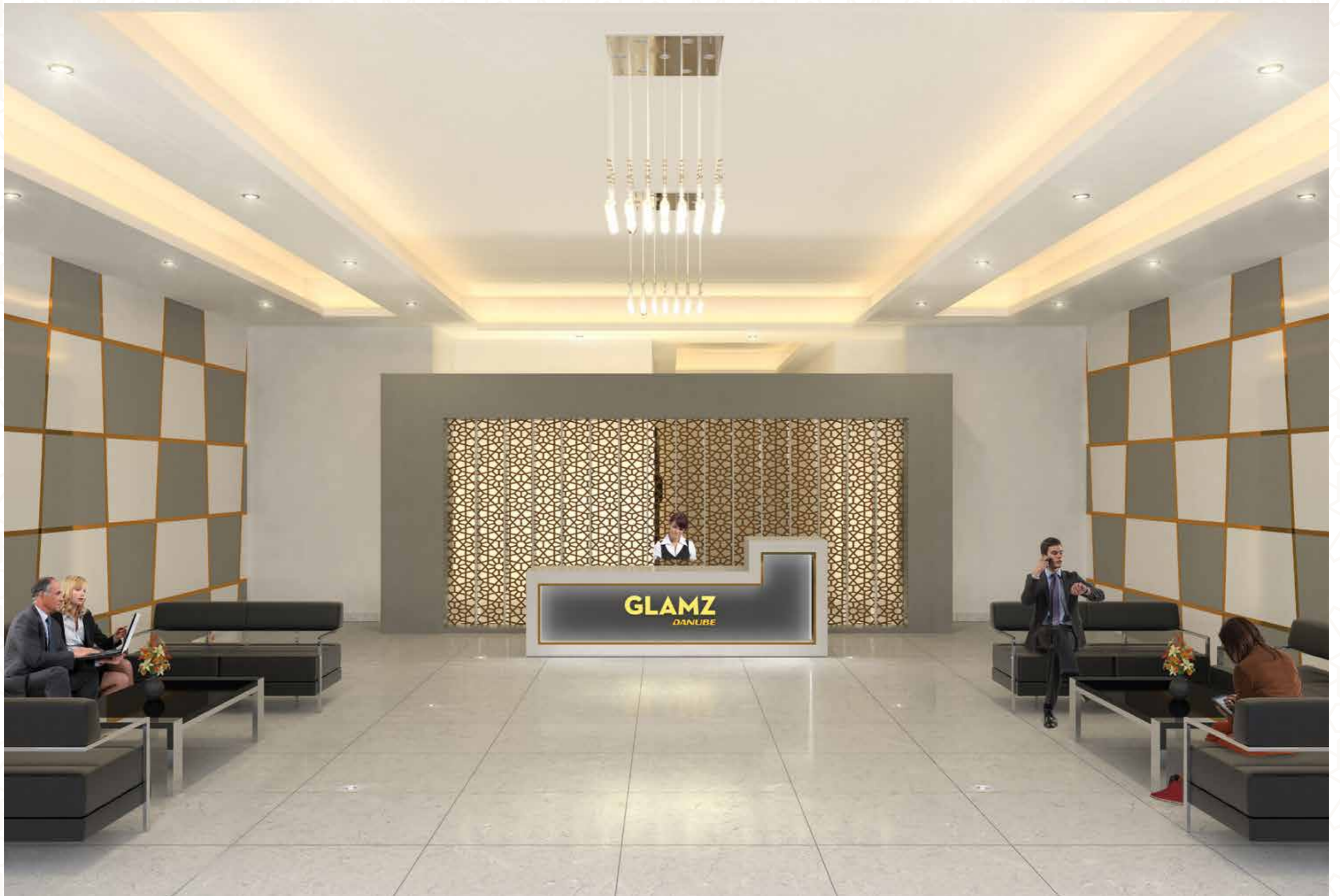
Danube Properties proudly presents yet another flagship project - Glamz.



The look of Glamz

Glamorous, versatile and gorgeous, Bollywood actress Shilpa Shetty Kundra embodies Glamz, the latest residential phenomenon from Danube Properties. As one of the most popular and sought-after celebrities in India, she is a trendsetter known for her distinctive style and tastes, a perfect fit as the brand ambassador of our twin-tower project located in Al Furjan, at the heart of New Dubai.







Built around you

A first in the region, Glamz by Danube is an innovative concept that puts a premium on space. A customizable home, every unit in Glamz is designed to suit your changing needs.

Glamz offers a selection of 418 studio, 1 and 2 bedroom fully furnished apartments, each fitted with modular furniture and a European technology convertible sofa that transforms into a full-sized bed at a gentle pull. So you get a spacious living room by day and a comfortable guest bedroom at night.

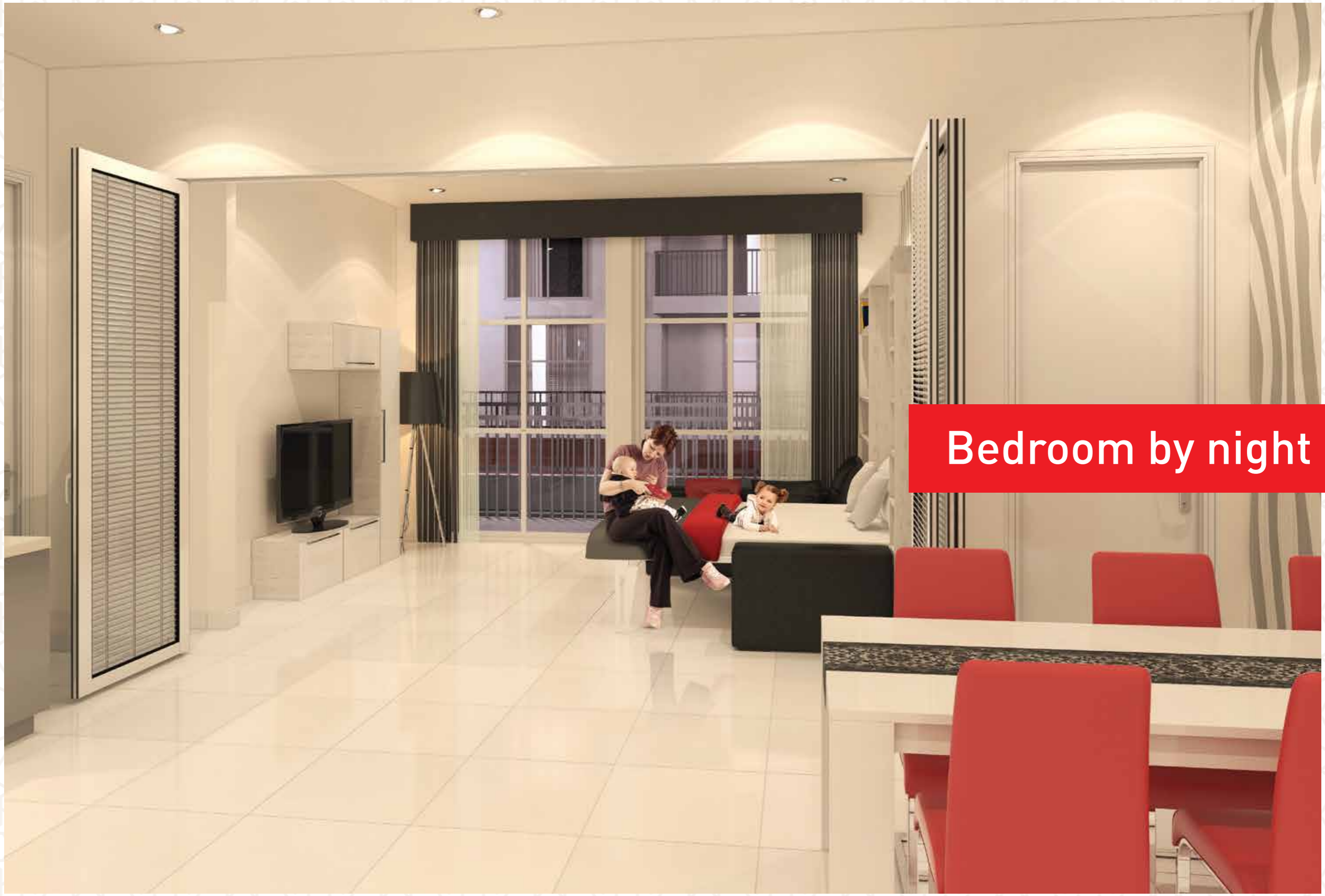
Living at Glamz is not just comfortable, it's also convenient. Glamz is located at Al Furjan - Dubai, next to Discovery Gardens; about 2 minutes away from the proposed Metro line and just 10 minutes away from the Al Maktoum International Airport.



Living room by day

European concept, designed and supplied by

DANUBE HOME



Bedroom by night



Your private haven

Spacious bedrooms with built-in wardrobes



Every meal a gourmet feast

Modular kitchen with the latest equipment and high-quality fixtures



Milano
ITALY

5-star luxury in your own home

Luxurious bath fittings made with Italian design



Complete amenities for active lifestyles

Badminton court

Platform tennis court

Health club

Swimming pool

Kids pool

Jacuzzi

Steam and Sauna room

Jogging track

Party hall

Barbecue deck

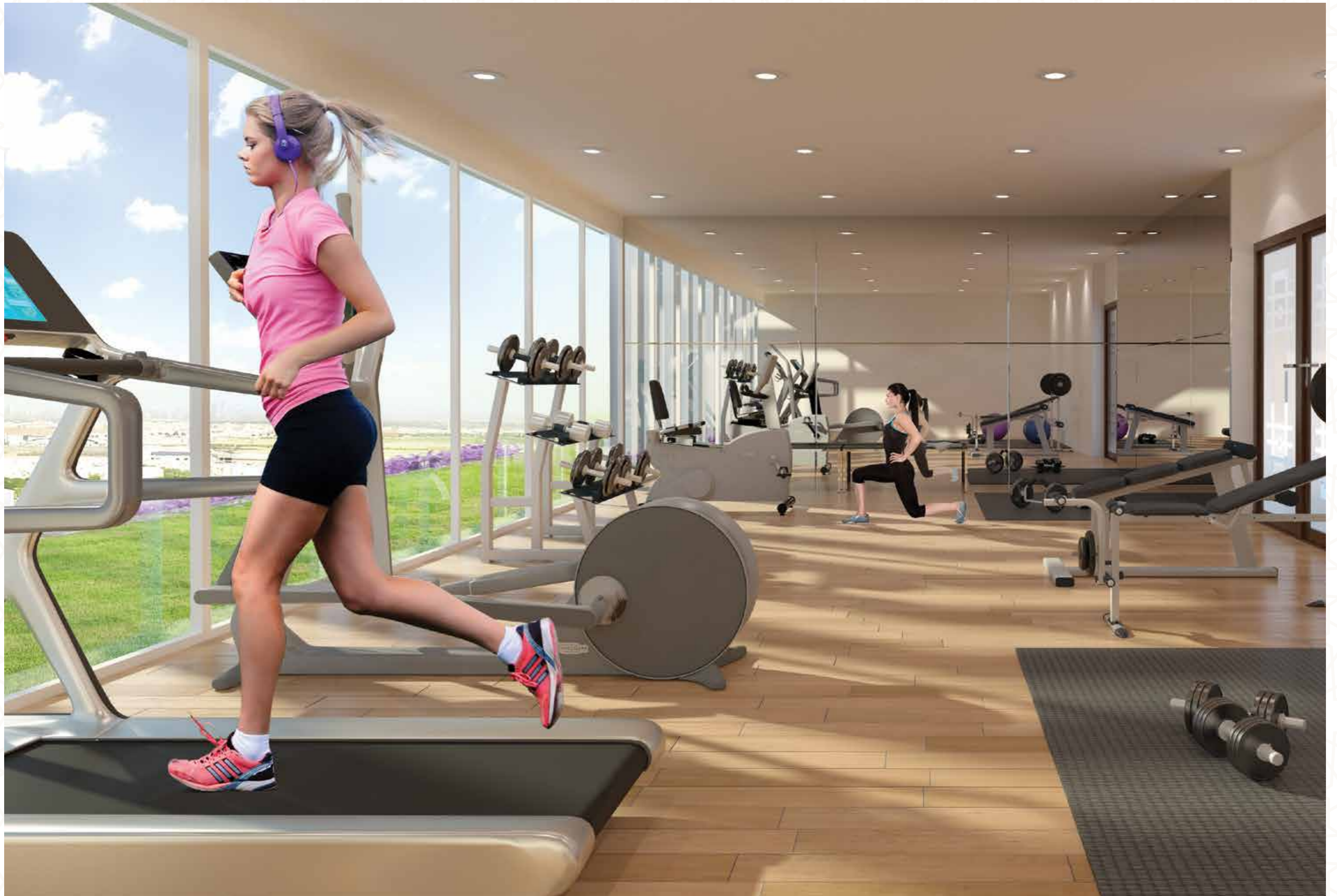




**Live an active lifestyle,
The choice is yours to make**



**A great place to indulge in
outdoor activities**



Warm up and cool down in state-of-the-art facilities

Fully-equipped health club with steam, sauna and massage bathtub



Fun under the sun? Just step out of your door

Outdoor swimming pool with a stunning water feature and sun deck



Kids' play area



Party hall

FIRST FLOOR STUDIO



FLAT TYPE F02 - STUDIO
(Flat No. 02, 03, 05, 06, 07,09,10)

TOTAL AREA 426-443 SQ FT



FIRST FLOOR STUDIO



FLAT TYPE F03 - STUDIO (Flat No. 12)

TOTAL AREA 395 SQ FT



FIRST FLOOR 1 BEDROOM

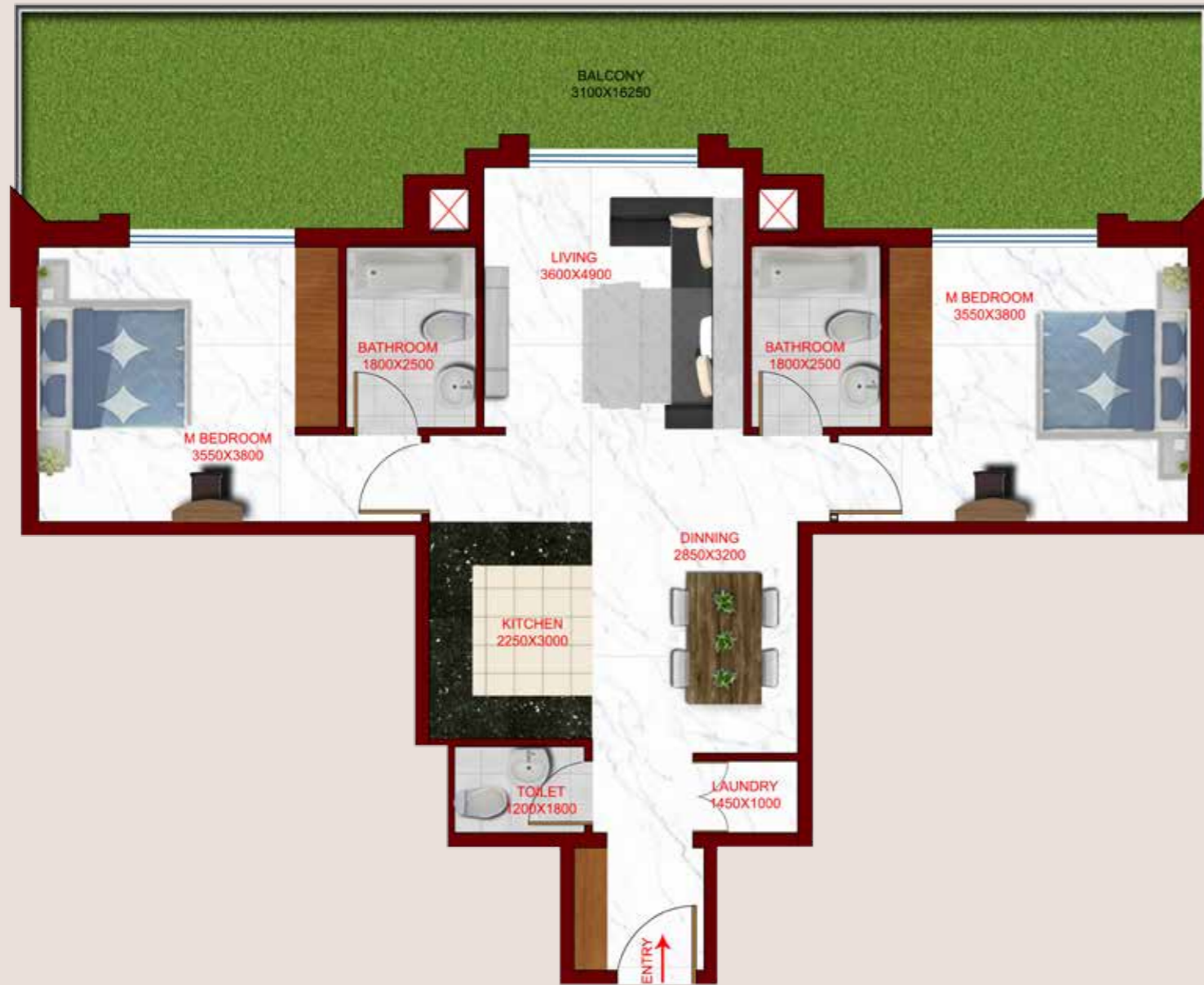


FLAT TYPE F01 - 1BR
(Flat No. 01,04,08,11)

TOTAL AREA 766 SQ FT

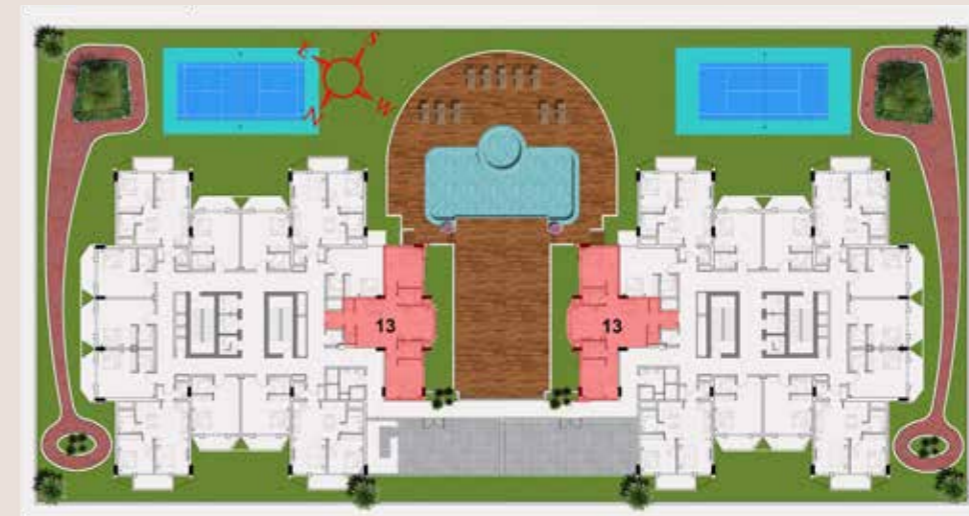


FIRST FLOOR 2 BEDROOM



FLAT TYPE F04 - 2BR
(Flat No. 13)

TOTAL AREA 1512 SQ FT

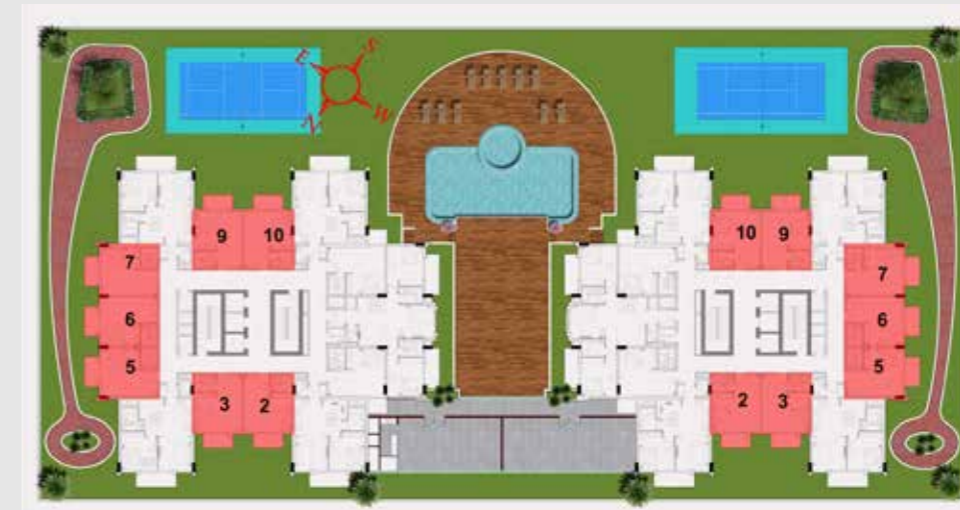


TYPICAL FLOOR PLAN STUDIO



FLAT TYPE T02 - STUDIO
(Flat No. 02,03,05,06,07,09,10)

TOTAL AREA 404-411 SQ FT



TYPICAL FLOOR PLAN STUDIO



FLAT TYPE T03 - STUDIO (Flat No. 12,14)

TOTAL AREA 395 SQ FT



TYPICAL FLOOR PLAN 1 BEDROOM

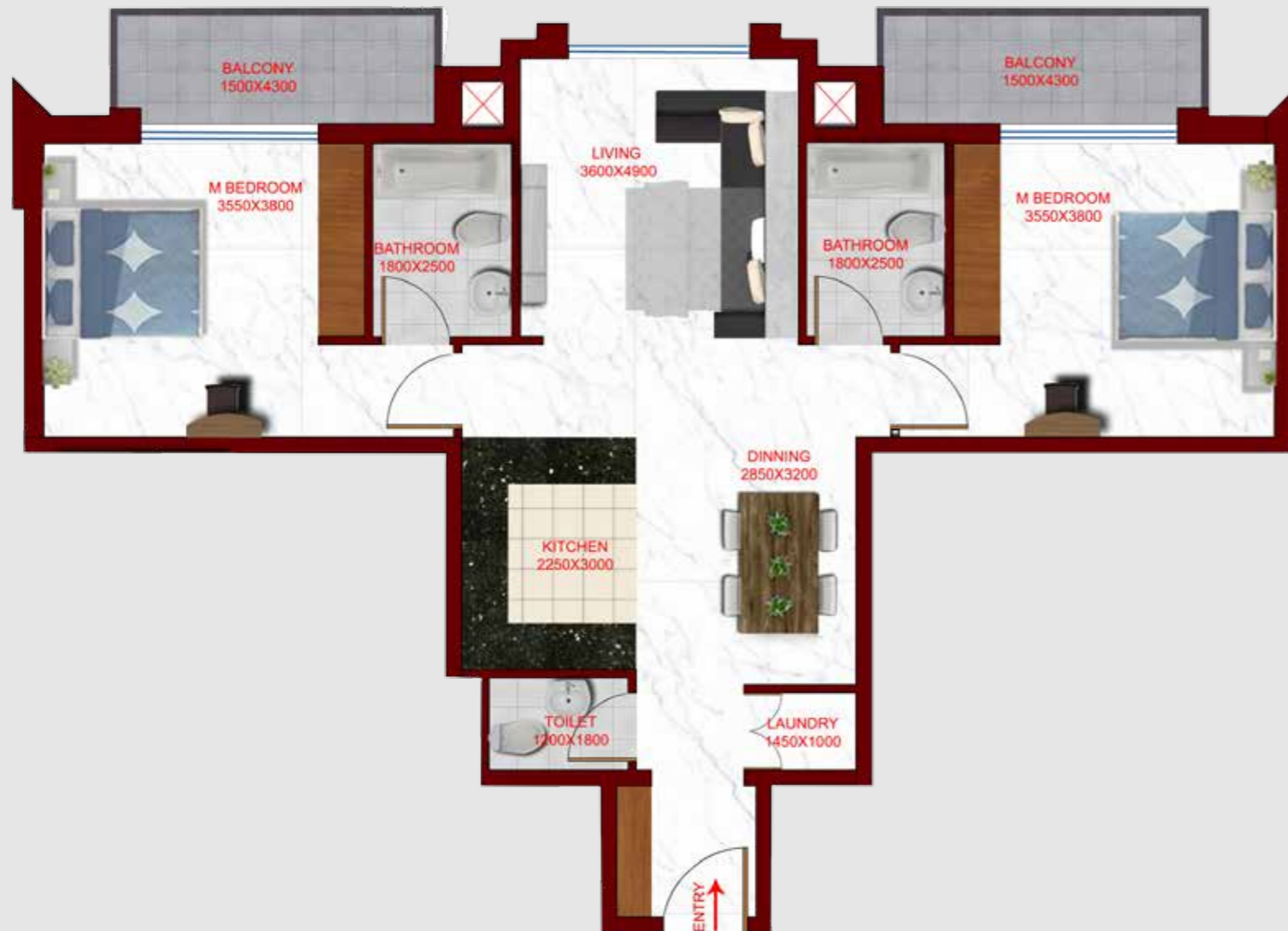


FLAT TYPE T01 - 1BR
(Flat No. 01, 04, 08, 11)

TOTAL AREA 766 SQ FT

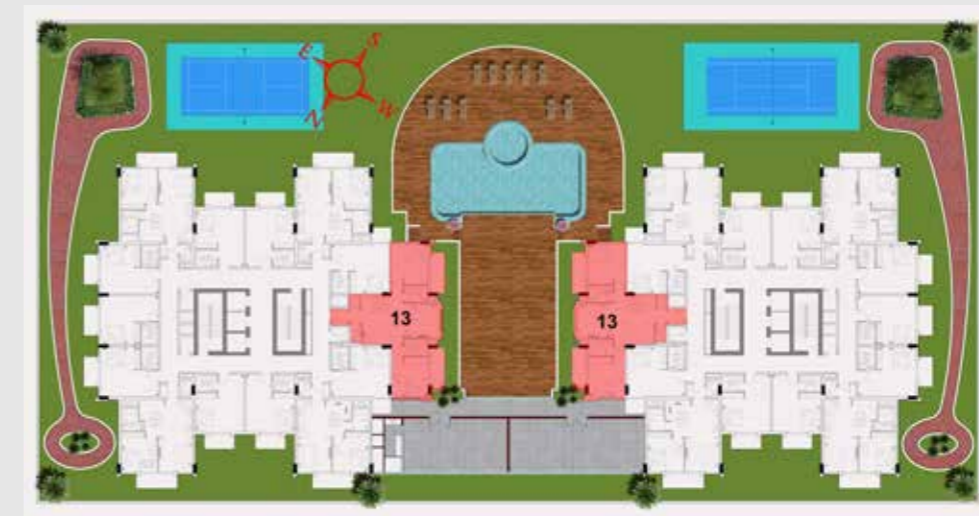


TYPICAL FLOOR PLAN 2 BEDROOM

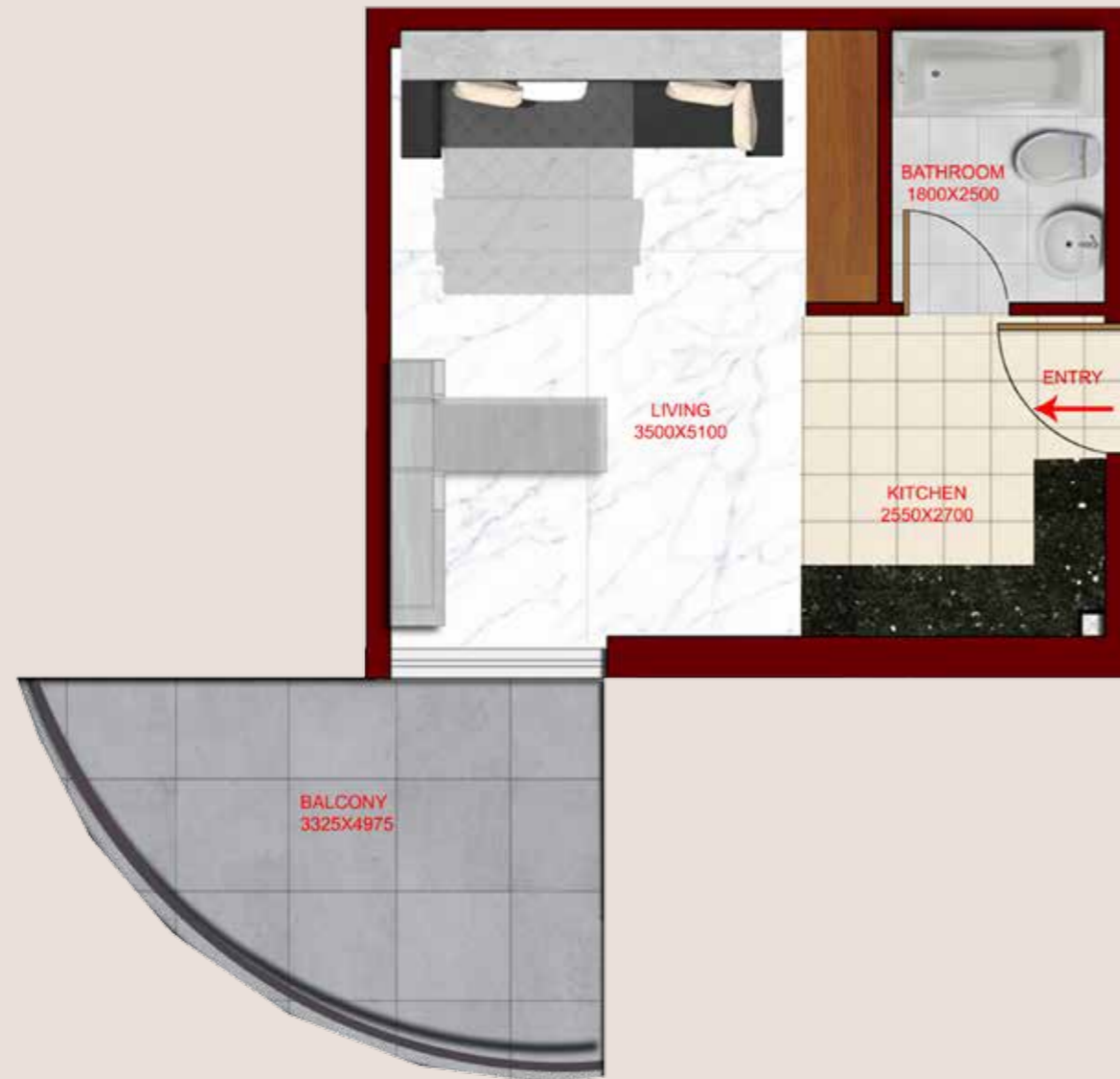


FLAT TYPE T04 - 2BR
(Flat No. 13)

TOTAL AREA 1168 SQ FT

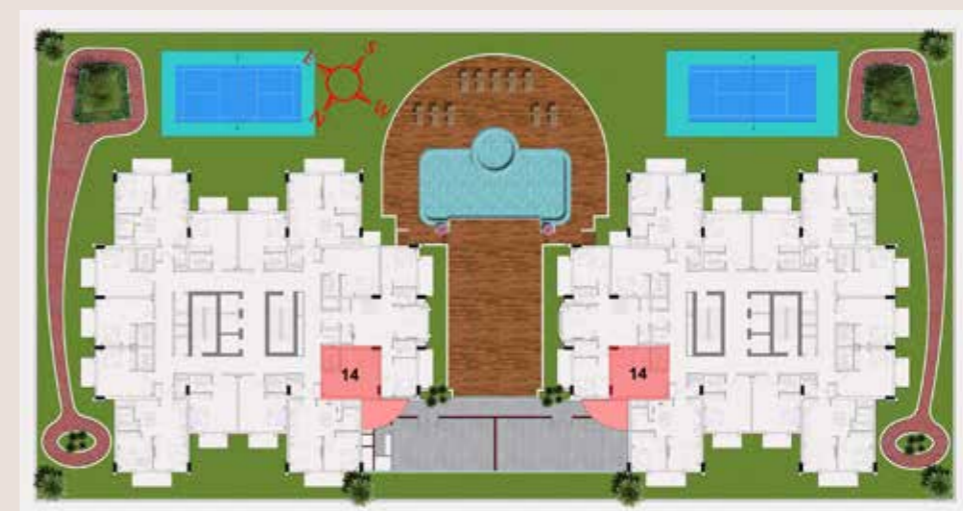


SECOND FLOOR STUDIO



FLAT TYPE T03A - STUDIO (Flat No. 14)

TOTAL AREA 503 SQ FT





Landmarks



Dubai Parks



Ibn Battuta Mall



JBR Beach



Mall of Emirates



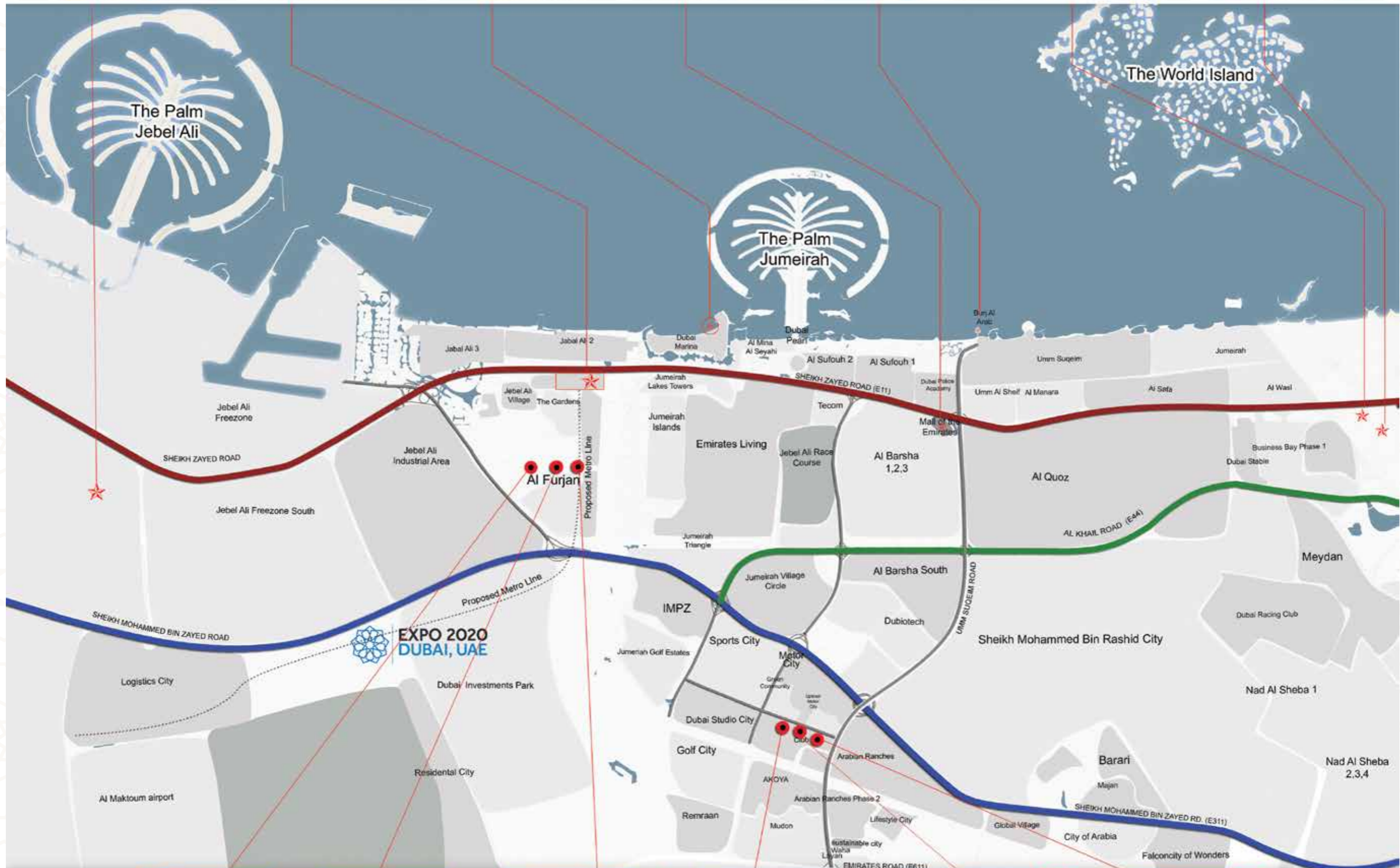
Burj Al Arab



Dubai Mall



Burj Khalifa



An exciting addition to Al Furjan

Al Furjan is a local phrase for a collection of houses or a small village. A contemporary and distinct family-oriented community, Al Furjan offers the comfort and warmth of traditional neighborhood living, combining spacious villas and terraced housing with abundant open spaces and a multitude of amenities.

Set in 560 hectares of the Ibn Battuta Mall and adjacent to Discovery Gardens and The Gardens, when complete, Al Furjan will feature over 4,000 homes.

Glamz by Danube is located minutes away from the Dubai EXPO 2020 site and is part of the many recent real estate developments in the new Dubai region.

- 2 minutes from the proposed Metro line
- 10 minutes from the Al Maktoum International Airport
- Next to Discovery Gardens
- Close to Ibn Battuta Mall

Delivering on our promises

We understand our responsibility as your property developer, and we remain committed to timely delivery of your properties. We firmly believe that our reputation as a successful developer is derived from our project delivery and quality construction.

Backed by our strong finances in building materials, all the sites of our existing projects are bustling with activity and progress. Our ultimate goal is to experience your smile while handing over your home keys to you!

For live updates of the projects underway, visit our website or scan the QR codes on the adjacent page.



Glitz 1



Glitz 2



DREAMZ

TYPE 1



DREAMZ

TYPE 2



DREAMZ

TYPE 3



**STARZ
DANUBE**



Glitz 3



Developer Name – Danube Properties Development LLC
Developer Number – 1009
Project Name – Glamz Residence
Project Number – 1749
Trustee Account Name – National Bank of Abu Dhabi (NBAD)
Trustee Account Number – 6206811356
Estimated Completion Date – Sept 2018
Estimated Service Charge – AED 12-14 per sq.ft.

DUBAI OFFICE

API Trio Tower (Novotel Hotel),
17th Floor, Al Barsha 1, Sheikh Zayed Road,
P.O. Box 113806, Dubai, UAE
T: + 971 4 399 8333 | F: + 971 4 399 8222
Website: www.danubeproperties
Email: enquiry@danubeproperties.ae

INDIA OFFICE

Unit No 111, 1st Floor The Capital Building,
G-Block, Opp ICICI Bank,
Bandra Kurla Complex, Bandra (E)
Mumbai 400 051
T: +91 22 611 40800

SAUDI OFFICE

MZ-002, Al-Ebdaa Tower
King Fahad Road, Al Olaya,
Riyadh, Saudi Arabia

www.danubeproperties.ae